

TALON PLATINUM



TALON PLATINUM



2
YEAR
LIMITED
WARRANTY

TALON PLATINUM



403T MAIN INTERIOR

403T KITCHEN



403T BATHROOM



403T MASTER BEDROOM





392T MAIN INTERIOR



392T GARAGE



392T KITCHEN



392T MASTER BEDROOM



335T MAIN INTERIOR

335T GARAGE



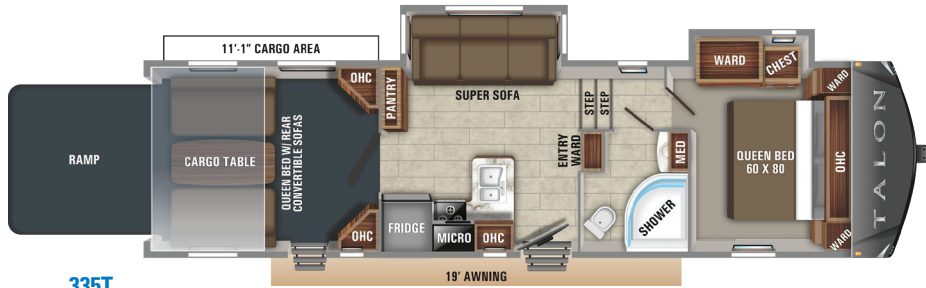
335T KITCHEN



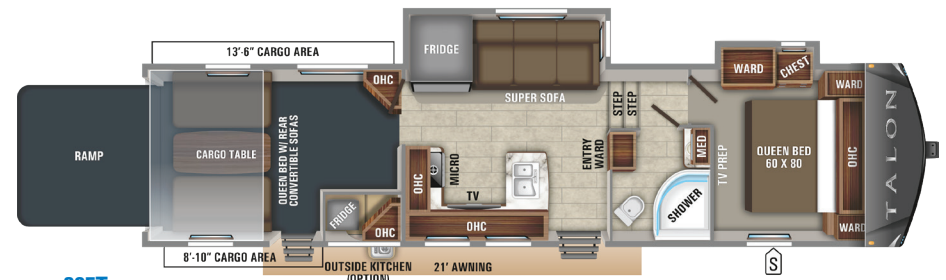
335T MASTER BEDROOM



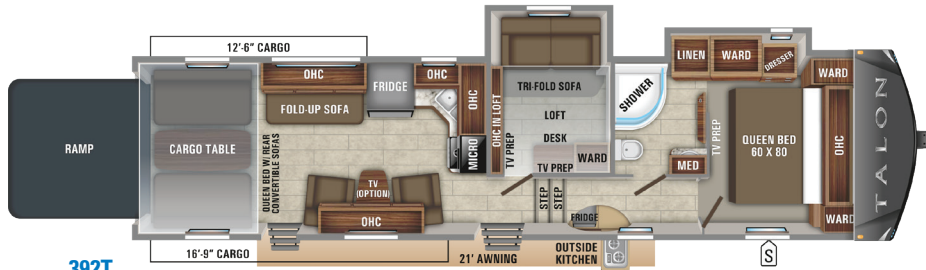
TALON PLATINUM FLOORPLANS



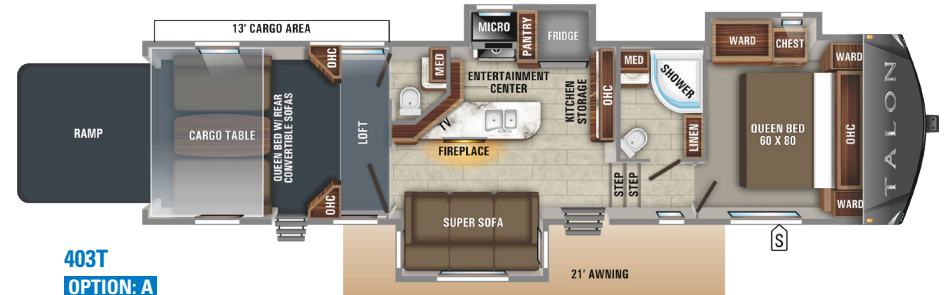
335T
OPTION: A



385T
OPTION: A



392T
OPTION: B



403T
OPTION: A

LEGEND		OPTION	
STORAGE	OHC OVERHEAD CABINETS	A	B
MED MEDICINE CABINET	FRIDGE REFRIGERATOR	U-DINETTE	FLIP-UP BUNK BED OPTION
MICRO MICROWAVE	WARD WARDROBE		FLIP-UP BUNK BED OPTION

TALON PLATINUM SPECS

FLOORPLAN	EXTERIOR LENGTH	EXTERIOR TRAVEL LENGTH*	EXTERIOR WIDTH	EXTERIOR HEIGHT (WITH A/C)	INTERIOR HEIGHT (UPPER DECK)	UNLOADED VEHICLE WEIGHT	DRY HITCH WEIGHT	GROSS VEHICLE WEIGHT RATING	CARGO CARRYING CAPACITY	FRESH WATER CAPACITY (INCLUDES WATER HEATER)	GREY WASTE WATER CAPACITY	BLACK WASTE WATER CAPACITY	SLEEP CAPACITY
335T	38' 0"	36' 7"	102"	13' 6"	6' 5"	11,005	2,460	16,000	4,995	142**	87**	50	5 - 7
385T	41' 5"	40' 0"	102"	13' 6"	6' 5"	12,260	2,765	16,900	4,640	142**	87**	50	5 - 7
392T	42' 5"	40' 11"	102"	13' 6"	6' 5"	12,235	2,760	16,900	4,665	142**	87**	50	9 - 12
403T	41' 5"	40' 0"	102"	13' 6"	6' 5"	12,190	2,815	16,500	4,310	142**	87**	87**	6 - 9

*Distance from the pin box to the bumper; total exterior length may be longer. **Split tanks

Unloaded Vehicle Weight (UVW): Sometimes referred to as "Dry Weight," UVW means the typical weight of this trailer as built at the factory. The UVW, as used in product literature and other promotional materials, does not include cargo, fresh water, propane, options or dealer-installed accessories.

Gross Vehicle Weight Rating (GVWR): GVWR means the maximum permissible weight of the trailer, including the UVW plus personal items, all cargo, fluids, options and dealer-installed accessories. The GVWR is equal to or greater than the sum of the UVW and the CCC.

Cargo Carrying Capacity (CCC): CCC means the maximum weight of personal items, food, fresh water, propane, tools, other cargo and dealer-installed accessories that can be carried by the trailer. CCC is equal to or less than GVWR minus UVW. The addition of options will decrease the CCC.

Hitch Weight (HW): The hitch weight, as used in product literature and other promotional materials, does not include cargo, fresh water, propane gas, options or dealer-installed accessories. The addition of these types of items will either add to or subtract from the stated hitch weight.

It is important for your safety and enjoyment that your tow vehicle be adequately sized and equipped to tow and handle the GVWR of the RV you select. Review weights and rating of your tow vehicle and consult a competent advisor for questions or advice. Whether you are new to RVing or a veteran, get a feel for the performance of your tow vehicle before heading out on the roadways. When you tow an RV, you must drive differently than when you drive a single vehicle. Practice hooking up, driving, backing up and braking in a safe environment or seek out professional instruction. Jayco affixes a weight label to each RV which lists weight information for that vehicle. See specifications chart above.

EXTERIOR EQUIPMENT

Climate Shield™ zero-degree-tested weather protection
I-Class™ cambered structural-steel I-beams featuring wide body construction
StrongholdVBL™ aluminum framed and vacuum bond laminated gel-coated fiberglass exterior walls
Magnum Truss™ Roof System (strongest tested roof in the industry) with one piece, seamless DiFlex II material
3/8-inch roof decking on 5-inch crowned truss rafters (R-30)
NEW! JaySMART™ (Safety Markers And Reverse Travel) LED Lighting (patent-pending)
Painted front fiberglass cap with Jayco logo and built-in specialty LED lighting
LED exterior lighting package
7000# Dexter® Axles with Nev-R-Adjust® brakes and E-Z Lube® hubs
NEW! Custom PLATINUM automotive-grade vinyl exterior graphics package
Stor-Galore™ heated and insulated pass-through storage
Dual 30 lb. propane bottles with auto regulator
NEW! Sturdy, anti-slip aluminum entrance steps (Made in U.S.A.!)
NEW! Upgraded XL grab handle at entrance door
Digital TV antenna
Exterior marine-grade speakers
Water system winterization kit
Outside shower
Rooftop and ground solar prep by Go Power®
Backup camera prep (rear observation, 2 locations)
Keyed Alike™ lock system (single key for all doors/locks)
Folding roof ladder
Sani-con® Turbo waste evacuation system pre-wire
Generator prep

INTERIOR EQUIPMENT

NEW! Modern Farmhouse interior design décor package
NEW! Solid hardwood slide fascia with "Rustic Barnwood" header
NEW! Handcrafted and dry-glazed Farmhouse White doors, drawers and trim
Heavy-duty, 75 lb., full extension, steel ball-bearing drawer guides
5/8 inch tongue and groove joined plywood floor decking
Shaw® residential carpeting with R2X® stain guard
NEW! Shaw® "Wood Plank" vinyl flooring (standard minimal carpeting)
LED interior lighting throughout
NEW! Upgraded decorative LED lighting
NEW! LED dimmer switches in main room

NEW! Central command center with built-in tank monitoring
Stainless steel, 3-burner range with glass cover
Stainless steel microwave with exhaust fan
NEW! Stainless steel kitchen sink with bamboo sink cover and strainer
NEW! Brushed nickel kitchen faucet with pullout sprayer
NEW! Living Room LED HDTV with fully digital HDMI output
NEW! Upgraded 3-zone 12V AM/FM/CD/DVD/USB A/V System with Bluetooth® and HDMI®
NEW! SuperSofa with heat, massage, and LED lighting (n/a 392T)
Water heater bypass system
Auto-ignition 35,000-BTU furnace with digital thermostat
Bathroom skylight
Bathroom power vent
NEW! LED backlit medicine cabinet with custom framed mirror
NEW! Bathroom stone and glass tile backsplash
NEW! Porcelain foot flush toilet
Gas-strutted under-bed storage
NEW! Residential quilted bedspread and pillows
Bedroom wired and framed for second 15,000-BTU A/C
NEW! Hardwood safety handrail on steps
NEW! Bathroom hallway window

RAMP AND CARGO EQUIPMENT

Hinged spring-assist, radius-cornered ramp door, 2,500-pound capacity, 93-3/8-inch-wide opening with anti-slip, non-skid flooring
LED high-intensity, flush-mounted ramp lights
Tuff-ply, rubberized garage floor liner
Steel backers in floor for wheel chocks
24-inch x 72-inch garage door with step light
Vent ports, tinted power roof vent
Pull-down ramp door screen

CUSTOMER VALUE PACKAGE (MANDATORY)

Goodyear® Endurance® "BEAST" tires (Made in the U.S.A.)
8 cu ft. double-door refrigerator
Custom 16" aluminum rims
Quick recovery gas/electric DSI water heater (17.8 gallon per hour)
Ducted 15,000-BTU roof A/C
50 amp service with second A/C prep
Stainless-steel residential appliances
Seamless-surface countertops

Fully enclosed and heated underbelly
Radiant barrier insulation in roof, slideout rooms, floor, bedroom and bath deck
Insulated Exterior Slam Baggage Doors
2" block-foam insulated garage floor
Garage D-rings mounted to steel frame
Electric side-mounted awning with integrated LED lights
40-gallon fuel tank with timer
Universal docking station
Black tank flush (2 on all 1/2-bath and full-bath models)
Battery disconnect
Pull-down rear screen
Upgraded MORryde® CRE3000™ suspension system
Jayco-exclusive residential Simmons® mattress
Full-coach LED lighting (interior and exterior)
16" spare Goodyear® tire (Made in the U.S.A.)
Pleated night shades
Rear electric-lift queen Beds/Rollover Sofas with folding armrests & cup holders
Designer exterior graphics

50TH ANNIVERSARY PACKAGE (MANDATORY)

Solid-surface kitchen countertops
6-point electric auto-leveling system
Frameless windows

OPTIONS

Customer Value Package (MANDATORY)
50th Anniversary package (MANDATORY)
5,500-watt Onan Gas Generator
2nd A/C in Bedroom (15,000-BTU)
Flip Down Bunk (392T only)
NEW! U-Dinette (in place of SuperSofa; 335T, 385T, 403T)
NEW! MORryde® StepAbove™ Entry Steps
NEW! Party Deck with "Quick Set" folding rails, rear entry steps, and awning
NEW! Outside camp kitchen (385T only)
Sani-Con Turbo Waste Management System
Dual Pane Frameless Tinted Safety Glass Windows
Extreme Weather Package

50TH ANNIVERSARY PACKAGE



6-POINT AUTO-LEVELING



FRAMELESS WINDOWS



SOLID-SURFACE KITCHEN COUNTERTOPS

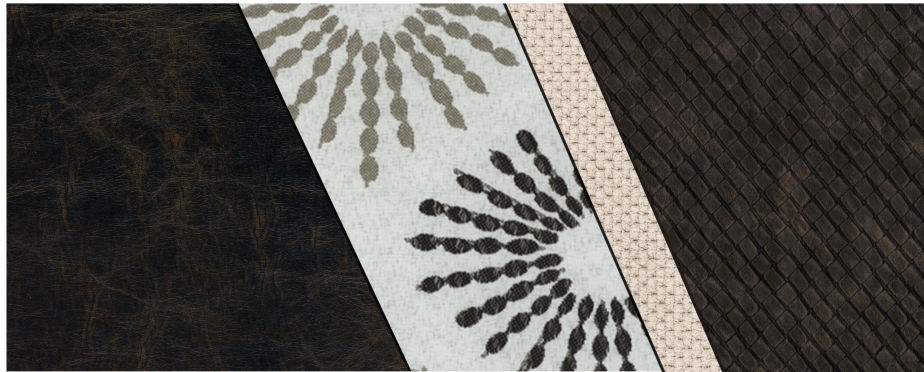
INTERIOR DÉCOR

MAIN

BEDSPREAD

TRIM

WINDOW TREATMENT



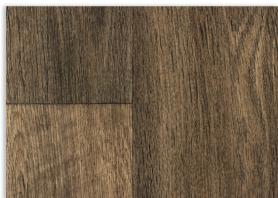
CABINETY



FASCIA



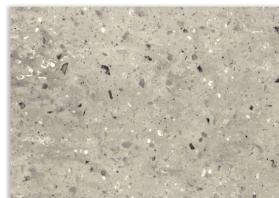
FLOORING



MAIN WOOD



SOLID SURFACE COUNTERTOPS



Unique & Beautiful

True interior design. More choice. Mindful craftsmanship.

Every fixture, fabric and feature has been carefully selected and expertly installed. The result is an aesthetic that's extraordinary — with Jayco's famous high level of livability. Designer-selected patterns and fabrics enhance the overall look and feel, while unique furniture design and contrasting hand-picked hardware and lighting enhance the exclusive decor package.



Led by Jayco's Interior Designer Stacy Stewart, our design, product development and engineering teams set out to answer the call for more choice in RV interiors and developed a market-disrupting design concept that could be expertly crafted without hampering production.

TALON PLATINUM ENHANCEMENTS



KEYED-ALIKE LOCK SYSTEM



HARDWOOD SLIDE ROOM FASCIA



INDUSTRY EXCLUSIVE LED BACKLIT MIRROR



Tow Vehicle Controlled
360° of Driver Intentionality

JAYCO'S EXCLUSIVE JAYSMART™
LIGHTING SYSTEM



LG SOLID-SURFACE KITCHEN COUNTERTOP WITH
BAMBOO SINK COVER AND STRAINER



MORRYDE CRE3000 RUBBERIZED SUSPENSION



RESIDENTIAL SIMMONS MATTRESS



360 SIPHON ROOF VENT



SHAW RESIDENTIAL CARPETING
WITH R2X STAIN GUARD



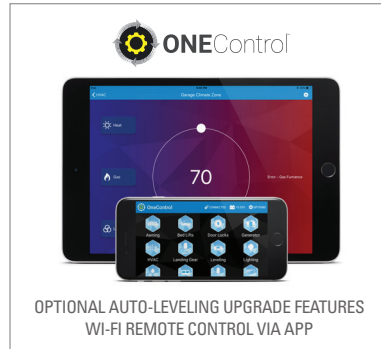
385T OUTSIDE KITCHEN (OPTIONAL)



12V 3-ZONE FURRIION® AV SYSTEM WITH
HDMI AND BLUETOOTH



6-POINT AUTO LEVELING
(ANNIVERSARY PACKAGE)



OPTIONAL AUTO-LEVELING UPGRADE FEATURES
WI-FI REMOTE CONTROL VIA APP

GET OFF GRID!

- Generator Prep
- Large Holding Tank Capacities
- Extra-Large Battery Area
- Solar Prep to Rooftop and Ground
- Opt. 5500 W Onan Generator

DRY CAMPING FRIENDLY

SOLAR ON THE SIDE
PORTABLE SOLAR KIT
TESTED + 20 YEARS
Go Power!
SOLARONTHESIDE.COM

Go Power!

GO POWER! GROUND AND ROOFTOP SOLAR PREP



CAMERA PREP



OPTIONAL SANI-CON TURBO WASTE
MANAGEMENT SYSTEM



FRAMELESS WINDOWS
(ANNIVERSARY PACKAGE)



MORE OUTLETS!
STRATEGICALLY PLACED OUTLETS THROUGHOUT.



OPTIONAL MORRYDE STEPABOVE
(OPTIONAL)

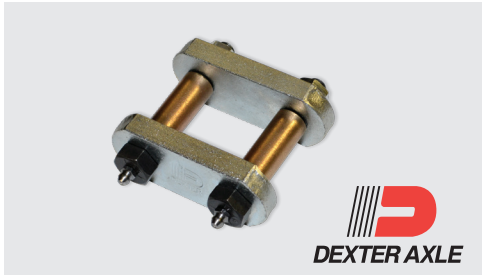
4-STAR HANDLING PACKAGE

The 4-Star Handling Package is exclusive to Jayco, a powerful blend of high-end components that make pulling a Talon fifth wheel a breeze.



DEXTER AXLE

DEXTER AXLES WITH NEV-R-ADJUST BRAKES The Benchmark of the trailer industry!



DEXTER AXLE

DEXTER HEAVY-DUTY SHACKLES WITH WET BOLT FASTENERS AND BRONZE BUSHINGS Resists the wear-and-tear of towing.



MORRYDE CRE-3000 RUBBERIZED SUSPENSION SYSTEM Better absorbs and isolates road shock.



GOODYEAR "BEAST" TIRES Made in the U.S.A. and featuring patented Durawall® technology.



JAYCO'S ROOF **vs** OTHER ROOFS

4,500 POUNDS ON A JAYCO ROOF VS. OTHER ROOFS

50% Stronger!



CLIMATE SHIELD

Extend your camping season with the Jayco Climate Shield.

It protects against extreme heat and extreme freezing—even in temperatures as high as 100 degrees or as low as zero degrees (Fahrenheit).*

LIVING ROOM

0°F **70°F**
100°F **69°F**

KITCHEN

0°F **69°F**
100°F **70°F**

BATHROOM

0°F **71°F**
100°F **68°F**

HOLDING TANK

0°F **60°F**
100°F **72°F**

BEDROOM

0°F **71°F**
100°F **71°F**

*Jayco tested fifth wheels in zero degrees F and 100 degrees F weather over an extended period of time in a controlled environment, and all functions of the coach were fully operational. Testing was done in a completely controlled environment; therefore, temperatures during testing may not represent actual temperatures in nature and cannot account for elements such as wind or moisture. In actual use, unit may not perform as well. Supplier of cooling components does not guarantee anything better than 20 degrees difference from ambient temperature. In addition, outside components are subject to freezing and require steps to properly insulate. Jayco's limited warranty does not cover damage caused by freezing. To learn more about Climate Shield and testing done by Jayco, visit www.jayco.com.

Meet your Jayco Dealer _____

Travel with Confidence _____



Follow Jayco
#Jayco50



Jayco, Inc. | P.O. Box 460 | Middlebury, IN 46540 © **RVIA** See dealer for further information and prices. All information in this brochure and on www.jayco.com is the latest available at the time of publication approval. Jayco reserves the right to make changes and to discontinue models without notice or obligation. Photography may show optional equipment or props used for decoration purposes only. RVs built for sale in Canada may differ to conform to Canadian codes. JAYCO and the JAYCO BIRD IN FLIGHT are registered trademarks of Jayco, Inc. Printed in USA 15K EJ 3/19 © 2019 Jayco, Inc. 274884-2



At Jayco, we build our RVs to handle every adventure, then back them with our industry-leading 2-year limited warranty. We, with support from our select partners, have you covered for **2 camping seasons**. That's **730 days**. You won't find a better warranty in the business, because the only strings we attach are those that deliver the ultimate in reliability. That's the Jayco difference. So go explore. For a copy of our 2-year limited warranty with complete terms and conditions, please contact your local Jayco dealer.